

# TURN-KEY ROBOTIC AUTOMATION

# PALLETIZUR™

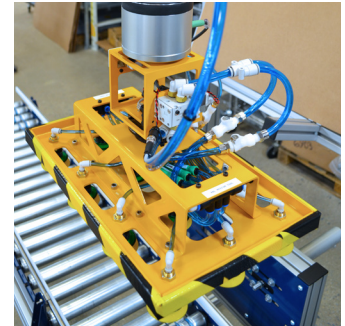
Stack 8.8 tons of product an hour with a collaborative robot.

## The PalletizUR Is Not a Kit

A fully collaborative, ready to deploy system.

Designed by cobot integration experts, the PalletizUR is a fully collaborative palletizing system.

- Minimal footprint - no caging or guarding needed
- Quick deployment - requires a 110v outlet and an air line
- Portable - built-in fork pockets within the welded base
- Multi-pallet reach - stack pallets on either side of the cobot



### COLLABORATIVE RATED

- Third party verified to meet the industry standards for collaborative system safety
- Plug-and-play area scanners with customizable safety zones

### CUSTOM GRIPPERS

- Light-weight, 3D printed design
- Optional multi-pick functionality
- Quick disconnect air lines and slide on tool changer

### LINE INTEGRATION

- Custom infeed conveyors and case nesting systems
- Multi-system configurations with diverters and reject stations



#### PalletizUR10

- Universal Robots UR10e OEM cobot
- Payloads up to 22 lbs
- Pallet stacks up to 70" in height



#### PalletizUR20

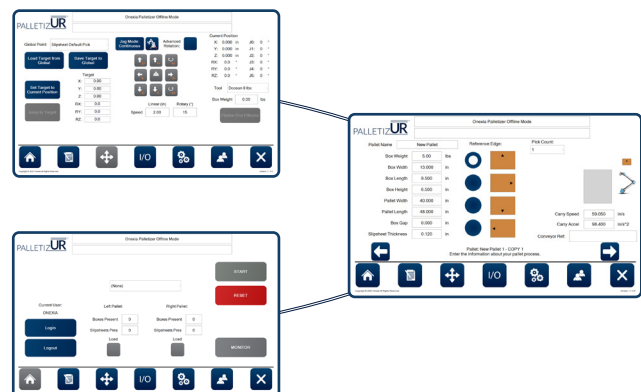
- Universal Robots UR20 OEM cobot
- Payloads up to 42 lbs
- Pallet stacks up to 96"+ in height

## Drag-and-drop Pallet Building

Never write a line of code.

Build and save custom pallet configurations without writing a line of code using ONExia's drag-and-drop cobot palletizing software.

- Simple interface - designed for non-technical end users
- Pallet library - build, edit, save, and recall hundreds of configurations
- Administrative controls - varying levels of system access
- Dual mode - tend two separate lines with one PalletizUR



### CUSTOMIZE PALLETES

- Create any layer configuration
- Orient shipping labels
- Add slip sheet between layers

### DATA COMMUNICATION

- Signal AGVs to remove pallets
- Monitor system output in real time
- Interact with inventory software

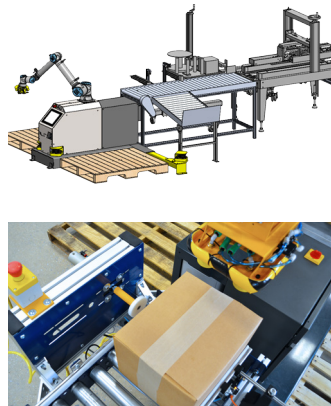
### SYSTEM FUNCTIONALITY

- Operated through a touchscreen
- Adjustable safety scanner zones
- Built-in conveyor controls

# CONFIDENTLY AUTOMATE PALLETIZING

PALLETIZUR™

The additional hardware & safety needed for a successful cobot palletizer deployment.



## Custom Conveyor Solutions

The perfect pallet starts with a perfect pick.

Designed to integrate with existing line configurations, ONExia's infeed conveyors orient incoming product to maximize the PalletizUR's output.

- **Conveyor controls** - toggle nesting positions and zones from the palletizer software
- **Flexible design** - hand adjustable guide rails for simplified line changeover
- **Product orientation** - fully integrated solutions for positioning side or bottom packed cases for palletizing

## QUALITY CONTROL INTEGRATION

- **Barcode readers** - scan codes, relay data, and verify label position prior to palletizing
- **Reject stations** - divert cases to another lane using a barcode reader, metal detector, or checkweigher

### VIDEO: SEE THE UR20 IN ACTION

Increased capacity to the ONExia Robotics line of palletizers designed for Universal Robots with payloads up to 42 lbs.

See it on YouTube: [youtube.com/onexiainc](https://youtube.com/onexiainc)



## We Made Collaborative Robot Safety a Priority

Third party verified to meet industry safety standards, the PalletizUR is fully collaborative and requires no caging or hard guarding to operate. Multiple customers have also done internal risk assessments prior to purchasing and the PalletizUR has passed every time.

## System Specifications

Every PalletizUR system includes the palletizer base and a Universal Robots OEM Collaborative Robot.

### MACHINE DETAILS

- Lifter travel: 19.5" (UR10) / 27.375" (UR20)
- Mobility: fork pockets for pallet jack or forklift
- HMI specs: 12.1" touchscreen
- Pallet sensors: photoeyes for pallet presence
- Power: single phase, 115 VAC, 15 amps
- Air consumption: based on box characteristics

### PALLET DIMENSIONS

- Max pallet height: 70" (UR10) / 96"+ (UR20)
- Max pallet width: 48"\*
- Max pallet depth: 40"\*

### CARTON/PAYLOAD

- Min box size: 8" x 8" x 3"\*
- Max box weight: 25 lbs (UR10) / 42 lbs (UR20)\*
- Max box size: weight dependent\*

\*Customizations available for unique pallet configurations

### STANDARD SAFETY

- The PalletizUR runs collaboratively out of the crate with no additional safety required.

### ADDITIONAL SAFETY

#### Area Scanners\*

- Slows robot if someone is in work area

#### Hard Guarding\*

- Complete guarding for work-cell

\*All available for additional cost